



Beijing Emarbio Science & Technology Co.,LTD

anti-CXCR7 Rabbit Polyclonal antibody

Catalog No.	EM54904-01	EM54904-02
Size	50µl	100µl

Reactivity: Human Rat Mouse

Swiss-Prot No.: p25106

All Names: chemokine orphan receptor 1; CXCR-7; CXCR7; G-protein coupled receptor 159; G-protein coupled receptor RDC1; RDC1

Immunogen: The antiserum was produced against synthesized peptide derived from C-terminal of human CXCR7.

Purification: The antibody was affinity-purified from rabbit antiserum by affinity-chromatography using epitope-specific immunogen.

Specificity: CXCR7 antibody detects endogenous levels of total CXCR7 protein.

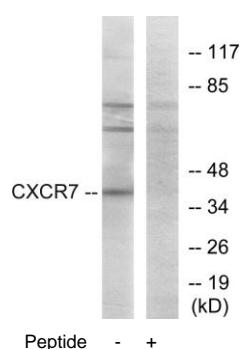
Application: WB: 1:500~1:1000 IF: 1:100~1:500 ELISA: 1:1000

Optimal dilutions/concentrations should be determined by the end user.

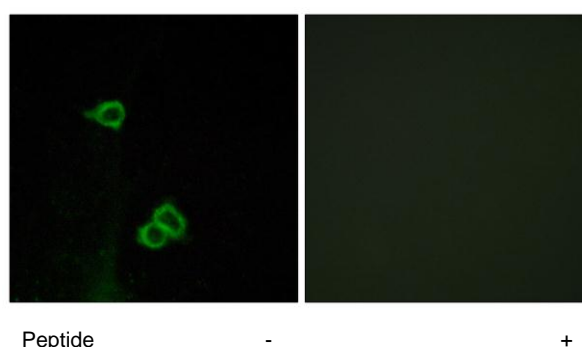
Form: Liquid ,1mg/ml

Storage buffer: Rabbit IgG in phosphate buffered saline , pH 7.4, 150mM NaCl, 0.02% sodium azide and 50% glycerol.Store at -20 ° C.Stable for 12 months from date of receipt

Storage: Store at -20°C/1 year. Do not aliquot the antibody.



Western blot analysis of extracts from COS-7 cells, using CXCR7 antibody.



Immunofluorescence analysis of COS-7 cells, using CXCR7 antibody.