



Anti-Caspase 3 Rabbit Polyclonal Antibody

Catalog No.	EM10214-01	EM10214-02
Size	50µl	100µl
Species reactivity:	Human , Moust , Rat	Molecular Weight: 37kDa

Background: This gene encodes a protein which is a member of the cysteine-aspartic acid protease (caspase) family. Sequential activation of caspases plays a central role in the execution-phase of cell apoptosis. Caspases exist as inactive proenzymes which undergo proteolytic processing at conserved aspartic residues to produce 2 subunits, large and small, that dimerize to form the active enzyme.

All Names: Apopain precursor, CASP-3, CPP-32, CPP32, Caspase-3, Cysteine protease CPP32, EC 3.4.22.-, ICE3, SCA-1, SREBP cleavage activity 1, Yama protein

Immunogen: A synthesized peptide derived from human Caspase 3

Application: WB: 1:1,000-3000

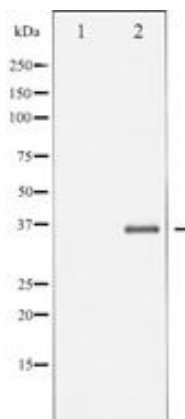
Optimal dilutions/concentrations should be determined by the end user.

Purification: Immunogen affinity purified

Form: Liquid ,1mg/ml

Storage buffer: Rabbit IgG in phosphate buffered saline , pH 7.4, 150mM NaCl, 0.02% sodium azide and 50% glycerol.

Storage: Store at -20°C. Do not aliquot the antibody.



Western blot analysis of Caspase 3 expression in Etoposide treated NIH-3T3 whole cell lysates, The lane on the left is treated with the antigen-specific peptide.