



anti-GR (Phospho-266) Rabbit Polyclonal antibody

Catalog No.	EM41062-01	EM41062-02
Size	50µl	100µl
Species reactivity:	Human Mouse Rat	Molecular Weight:

All Names:GCR, GRL, GRL1, NR3C1, glucocorticoid receptor

Immunogen:The antiserum was produced against synthesized phosphopeptide derived from human GR around the phosphorylation site of serine 226 (L-L-S^P-P-L).

Purification:The antibody was affinity-purified from rabbit antiserum by affinity-chromatography using epitope-specific phosphopeptide. The antibody against non-phosphopeptide was removed by chromatography using non-phosphopeptide corresponding to the phosphorylation site.

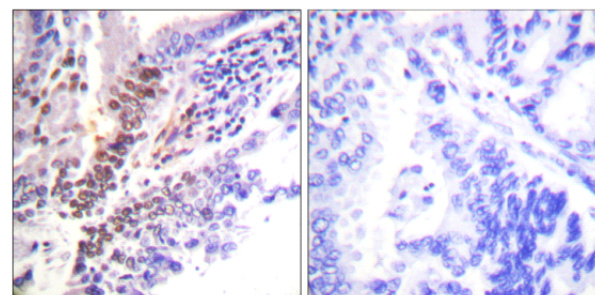
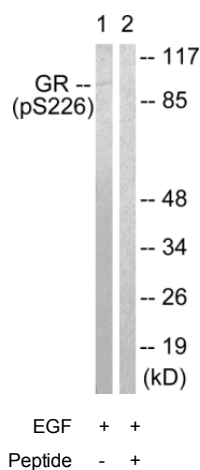
Application: **WB 1:500-1:3000 IHC 1:50-1:100 ELISA 1:5000**

Optimal dilutions/concentrations should be determined by the end user.

Form: Liquid ,1mg/ml

Storage buffer: Rabbit IgG in phosphate buffered saline , pH 7.4, 150mM NaCl, 0.02% sodium azide and 50% glycerol.Store at -20 ° C.Stable for 12 months from date of receipt

Storage: Store at -20°C. Do not aliquot the antibody.



Peptide - +

Western blot analysis of extracts from Jurkat cells, treated with EGF (200ng/ml, 15mins), using GR (Phospho-Ser226) antibody

Immunohistochemical analysis of paraffin-embedded human lung carcinoma tissue using GR (Phospho-Ser226) antibody