



Beijing Emarbio Science & Technology Co.,LTD

anti-Tau(Phospho-Ser396) Rabbit Polyclonal antibody

Catalog No.	EM41205-01	EM41205-02
Size	50μl	100μl
Species reactivity:	Human Mouse Rat	Molecular Weight:

All Names:MAPT, MTBT1, Microtubule-associated protein tau, Neurofibrillary tangle protein, PHF-tau, Paired helical filament-tau

Immunogen:The antiserum was produced against synthesized phosphopeptide derived from human Tau around the phosphorylation site of serine 396 (Y-K-S^P-P-V).

Purification:The antibody was affinity-purified from rabbit antiserum by affinity-chromatography using epitope-specific phosphopeptide. The antibody against non-phosphopeptide was removed by chromatography using non-phosphopeptide corresponding to the phosphorylation site.

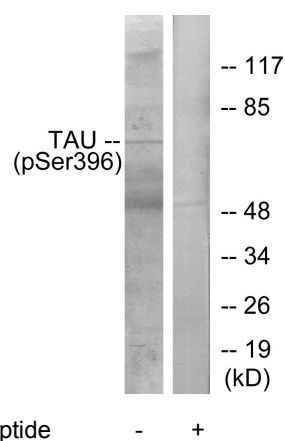
Application: WB 1:500-1:3000 ELISA 1:20000

Optimal dilutions/concentrations should be determined by the end user.

Form: Liquid ,1mg/ml

Storage buffer: Rabbit IgG in phosphate buffered saline , pH 7.4, 150mM NaCl, 0.02% sodium azide and 50% glycerol.

Storage: Store at -20°C. Do not aliquot the antibody.



Western blot analysis of extracts from HeLa cells, using Tau (Phospho-Ser396) Antibody.