



Anti- β I tubulin Mouse Monoclonal Antibody(2G6)

Catalog No.	EM31020-01	EM31020-02
Size	50 μ l	100 μ l

Tubulin is one of several members of a small family of globular proteins. The tubulin superfamily includes five distinct families, the alpha-, beta-, gamma-, delta-, and epsilon-tubulins. The most common members of the tubulin family are α -tubulin and β -tubulin, the proteins that make up microtubules. Each has a molecular weight of approximately 55 KD. Microtubules are assembled from dimers of α - and β -tubulin.

Molecular Weight: 50KD

Application : WB 1 : 5,000-10,000 Optimal dilutions should be determined by the end user.

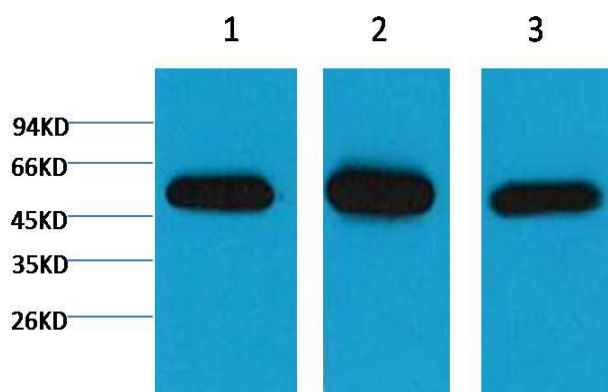
species reactivity: Human Rat Mouse

Specificity: The β I tubulin antibody can detect endogenous β I tubulin protein.

Form: Liquid ,1mg/ml

Storage buffer: PBS, pH 7.4, containing 0.02% sodium azide as Preservative and 50% Glycerol

Storage: Store at -20°C. Do not aliquot the antibody.



Western blot analysis of 1) HeLa, 2) Mouse Brain Tissue, 3) Rat Brain Tissue with β I tubulin diluted at 1:5,000.