



EMAR Beijing Emarbio Science & Technology Co.,LTD

Anti- β -tubulin Mouse Monoclonal Antibody

Catalog No.	EM31022-01	EM31022-02
Size	50 μ l	100 μ l

Microtubules are constituent parts of the mitotic apparatus, cilia, flagella, and elements of the cytoskeleton. They consist principally of 2 soluble proteins, alpha- and beta-tubulin, each of about 55,000 Da. Antibodies against beta Tubulin are useful as loading controls for Western Blotting. However it should be noted that levels of β -Tubulin may not be stable in certain cells. For example, expression of β -Tubulin in adipose tissue is very low and therefore β -Tubulin should not be used as loading control for these tissues.

Molecular Weight: 55KD

Application : WB 1:5,000-20,000 IHC 1:200 IF 1:200

Optimal dilutions should be determined by the end user.

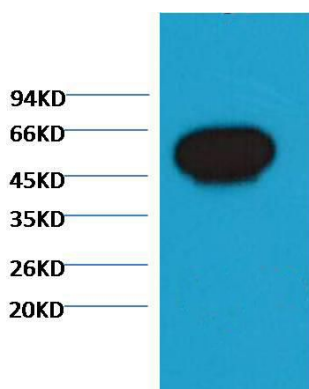
species reactivity:Zebrafish

Specificity:The β -tubulin antibody can detects Zebrafish endogenous β -tubulin protein.

Form: Liquid ,1mg/ml

Storage buffer: PBS, pH 7.4, containing 0.02% sodium azide as Preservative and 50% Glycerol

Storage: Store at -20°C. Do not aliquot the antibody.



Western blot analysis of Zebrafish skeletal muscle with β -tubulin Mouse mAb(Zebrafish Specific) diluted at 1:5,000.

EMAR

EMAR