



## Anti- $\beta$ -actin Mouse Monoclonal Antibody(K4)

Catalog No.	EM31023-01	EM31023-02
Size	50 $\mu$ l	100 $\mu$ l

$\beta$ -actin is one of six different actin isoforms that have been identified. The actin molecules found in cells of various species and tissues tend to be very similar in their immunological and physical properties. Therefore, antibodies against  $\beta$ -actin are useful as loading controls for Western Blotting. However it should be noted that levels of  $\beta$ -actin may not be stable in certain cells. For example, expression of  $\beta$ -actin in adipose tissue is very low and therefore  $\beta$ -actin should not be used as loading control for these tissues.

**Molecular Weight:** 43KD

**Application :** WB 1:5,000-10,000      Optimal dilutions should be determined by the end user.

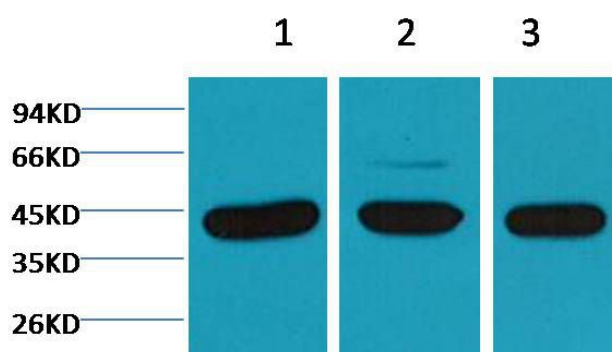
**species reactivity:** Human Rat Mouse Monkey Dog

**Specificity:** The  $\beta$ -actin antibody can detect endogenous  $\beta$ -actin protein.

**Form:** Liquid ,1mg/ml

**Storage buffer:** PBS, pH 7.4, containing 0.02% sodium azide as Preservative and 50% Glycerol

**Storage:** Store at -20°C. Do not aliquot the antibody.



Western blot analysis of 1) Hela, 2) Mouse Brain tissue, 3) Rat Brain tissue with  $\beta$ -actin diluted at 1:5,000.