



## Anti- $\beta$ -tubulin Mouse Monoclonal Antibody(K6)

Catalog No.	EM31024-01	EM31024-02
Size	50 $\mu$ l	100 $\mu$ l

Microtubules are constituent parts of the mitotic apparatus, cilia, flagella, and elements of the cytoskeleton. They consist principally of 2 soluble proteins, alpha- and beta-tubulin, each of about 55,000 Da. Antibodies against beta Tubulin are useful as loading controls for Western Blotting. However it should be noted that levels of  $\beta$ -Tubulin may not be stable in certain cells. For example, expression of  $\beta$ -Tubulin in adipose tissue is very low and therefore  $\beta$ -Tubulin should not be used as loading control for these tissues.

**Molecular Weight:** 55KD

**Application :** WB 1:5,000-10,000 Optimal dilutions should be determined by the end user.

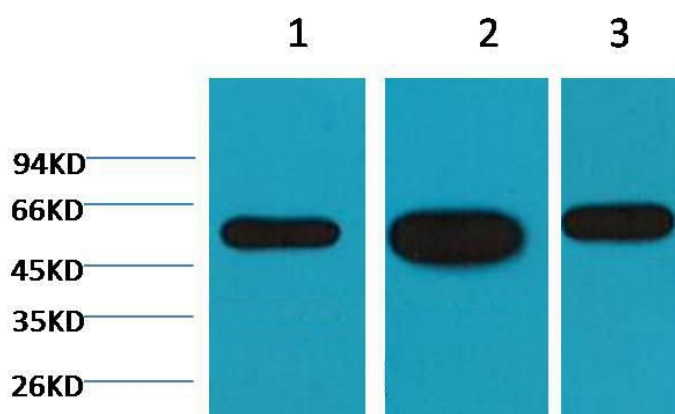
**species reactivity:** Human Rat Mouse

**Specificity:** The  $\beta$ -tubulin antibody can detect endogenous  $\beta$ -tubulin protein.

**Form:** Liquid ,1mg/ml

**Storage buffer:** PBS, pH 7.4, containing 0.02% sodium azide as Preservative and 50% Glycerol

**Storage:** Store at -20°C. Do not aliquot the antibody.



Western blot analysis of 1) HeLa, 2) Mouse Brain tissue, 3) Rat Brain tissue with  $\beta$ -tubulin diluted at 1:5,000.