



## Anti-GAPDH Rabbit Polyclonal Antibody

Catalog No.	EM32010-01	EM32010-02
Size	50 $\mu$ l	100 $\mu$ l

Glyceraldehyde 3 phosphate dehydrogenase (GAPDH) is well known as one of the key enzymes involved in glycolysis. GAPDH is constitutively expressed in almost all tissues at high levels, therefore antibodies against GAPDH are useful as loading controls for Western Blotting. Some physiological factors, such as hypoxia and diabetes, increase GAPDH expression in certain cell types.

**Molecular Weight:**37KD

**Application :** WB 1:5,000 IHC 1:200 Optimal dilutions should be determined by the end user.

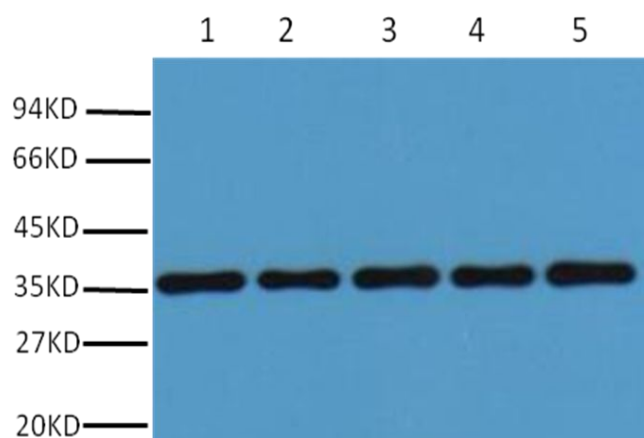
**species reactivity:**Human Rat Mouse Monkey Chicken Hamster Sheep Xenopus

**Specificity:**The GAPDH Rabbit Polyclonal Antibody can detects endogenous GAPDH protein.

**Form:** Liquid ,1mg/ml

**Storage buffer:** PBS, pH 7.4, containing 0.02% sodium azide as Preservative and 50% Glycerol

**Storage:** Store at -20°C. Do not aliquot the antibody.



Western blot analysis of 293T (1), Rat brain (2), NIH 3T3(3), Sheep Muscle(4),Rabbit testis(5) with GAPDH rabbit polyclonal diluted at 1:20,000.