



Anti-Plant-actin Rabbit Polyclonal Antibody

Catalog No.	EM32012-01	EM32012-02
Size	50 μ l	100 μ l

β -Actin is one of six different actin isoforms that have been identified. The actin molecules found in cells of various species and tissues tend to be very similar in their immunological and physical properties. Therefore, Antibodies against β -Actin are useful as loading controls for Western Blotting. However it should be noted that levels of β -Actin may not be stable in certain cells. For example, expression of β -Actin in adipose tissue is very low and therefore β -Actin should not be used as loading control for these tissues.

Molecular Weight:43KD

Application : WB 1:3,000 Optimal dilutions should be determined by the end user.

species reactivity: *Arabidopsis* *Nicotiana tabacum* *Oryza sativa* *Hordeum vulgare*

Predicted to work with:

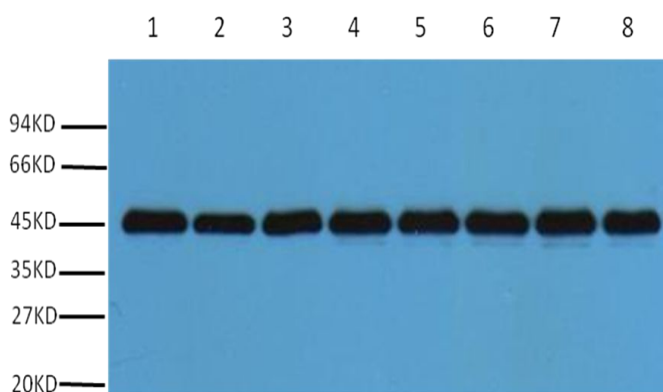
Brassica napus, Gossypium herbaceum, Solanum tuberosum, Setaria italic, Triticum monococcum, Brachypodium distachyon, Chrysanthemum seticuspe, Glycine max, Mangifera, Thellungiella halophila, Zoysia japonica, Isatis tinctoria.

Specificity:The plant--actin Rabbit Polyclonal Antibody can detects endogenous plant-actin protein.

Form: Liquid ,1mg/ml

Storage buffer: PBS, pH 7.4, containing 0.02% sodium azide as Preservative and 50% Glycerol

Storage: Store at -20°C. Do not aliquot the antibody.



Western blot analysis of *Nicotiana tabacum* leaf (1), *Nicotiana tabacum* root(2), *Nicotiana* seed (3), *Oryza sativa* flower(4) , *Oryza sativa* seed(5), *Oryza sativa* leaf(6), *Hordeum vulgare* seed (7), *Hordeum vulgare* leaves(8) with plant actin rabbit polyclonal antibody diluted at 1:3000.