



Anti-GAPDH Rabbit Polyclonal Antibody(Zebrafish Specific)

Catalog No.	EM32013-01	EM32013-02
Size	50 μ l	100 μ l

Glyceraldehyde 3 phosphate dehydrogenase (GAPDH) is well known as one of the key enzymes involved in glycolysis. GAPDH is constitutively expressed in almost all tissues at high levels, therefore antibodies against GAPDH are useful as loading controls for Western Blotting. Some physiological factors, such as hypoxia and diabetes, increase GAPDH expression in certain cell types.

Molecular Weight:37KD

Application : WB 1:5,000-10,000 IHC 1:200 IF1:200

Optimal dilutions should be determined by the end user.

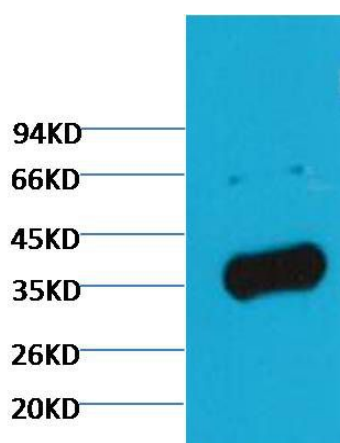
species reactivity:Zebrafish

Specificity:The GAPDH antibody can detects Zebrafish endogenous GAPDH protein.

Form: Liquid ,1mg/ml

Storage buffer: PBS, pH 7.4, containing 0.02% sodium azide as Preservative and 50% Glycerol

Storage: Store at -20°C. Do not aliquot the antibody.



Western blot analysis of Zebrafish skeletal muscle with GAPDH Rabbit pAb(Zebrafish Specific) diluted at 1:5,000.