



Anti-Rubisco Mouse Polyclonal Antibody(Large Chain)

Catalog No.	EM32014-01	EM32014-02
Size	50 μ l	100 μ l

Ribulose-1,5-bisphosphate carboxylase oxygenase, commonly known by the abbreviation RuBisCO, is an enzyme involved in the first major step of carbon fixation, a process by which atmospheric carbon dioxide is converted by plants to energy-rich molecules such as glucose.

Molecular Weight:~53KD

Application : WB 1:3,000-5,000 Optimal dilutions should be determined by the end user.

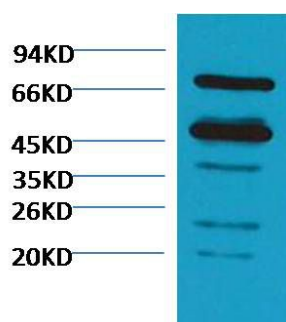
species reactivity:Various Plants

Specificity:The Rubisco Mouse Polyclonal Antibody can detects endogenous Rubisco Large Chain protein.

Form: Liquid ,1mg/ml

Storage buffer: PBS, pH 7.4, containing 0.02% sodium azide as Preservative and 50% Glycerol

Storage: Store at -20°C. Do not aliquot the antibody.



Western blot analysis of Arabidopsis thaliana with Rubisco diluted at 1:5,000.