



Beijing Emarbio Science & Technology Co.,LTD

Anti- α -tubulin Rabbit Polyclonal Antibody

Catalog No.	EM32015-01	EM32015-02
Size	50 μ l	100 μ l

Tubulin is one of several members of a small family of globular proteins. The most common members of the tubulin family are α -tubulin and β -tubulin, the proteins that make up microtubules. Each has a molecular weight of approximately 55 kiloDaltons. Microtubules are assembled from dimers of α - and β -tubulin.

Molecular Weight:55KD

Application : WB 1:2,000 IHC 1:200 Optimal dilutions should be determined by the end user.

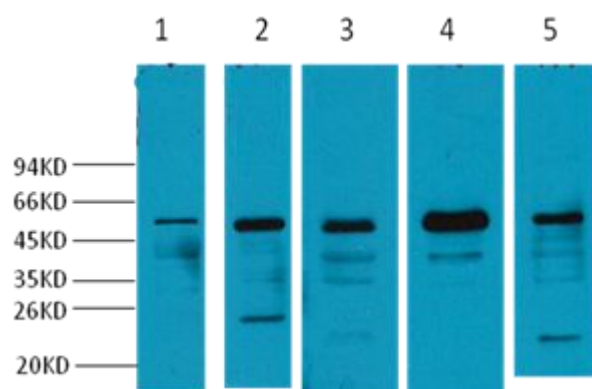
species reactivity:Human Rat Mouse

Specificity:The α -tubulin Rabbit Polyclonal Antibody an detects endogenous α -tubulin protein.

Form: Liquid ,1mg/ml

Storage buffer: PBS, pH 7.4, containing 0.02% sodium azide as Preservative and 50% Glycerol

Storage: Store at -20°C. Do not aliquot the antibody.



Western blot analysis of 1) Mouse skeletal muscle tissue, 2) Mouse kidney tissue, 3) Mouse Heart Tissue, 4) Mouse brain tissue, 5) Mouse Liver tissue with α -tubulin Rabbit pAb diluted at 1:2,000.