



Anti-KT3 Tag Mouse Monoclonal Antibody(2C9)

Catalog No.	EM33018-01	EM33018-02
Size	50 μ l	100 μ l

KT3-tag peptide KPPTPPPEPET conjugated to KLH. KT3-Tag antibody can recognize C-terminal, internal, and N-terminal KT3-tagged proteins.

Molecular Weight: N/A

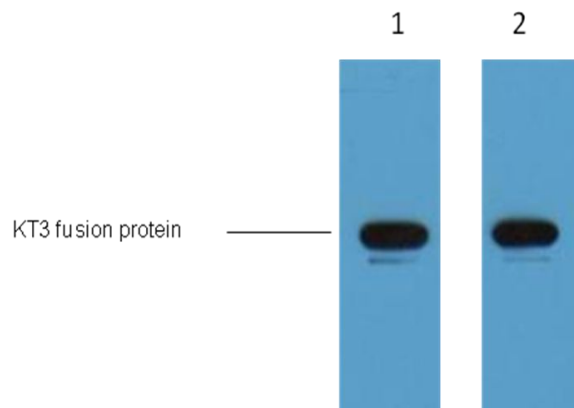
Application : WB 1:5000 Optimal dilutions should be determined by the end user.

Specificity:The KT3 tag antibody can recognize KT3 tag fusion proteins.

Form: Liquid ,1mg/ml

Storage buffer: PBS, pH 7.4, containing 0.02% sodium azide as Preservative and 50% Glycerol

Storage: Store at -20°C. Do not aliquot the antibody.



1 μ g KT3 fusion protein+ Primary antibody dilution at
1、 1:5,000 2、 1:10,000