



Beijing Emarbio Science & Technology Co.,LTD

## Anti-mCherry Tag Mouse Polyclonal Antibody

Catalog No.	EM34022-01	EM34022-02
Size	50µl	100µl

mCherry is a fluorophore (a fluorescent molecule) used in biotechnology as a tracer to follow the flow of fluids, as a marker when tagged to molecules and cells components. mCherry is a monomeric fluorescent construct with peak absorption/emission at 587 nm and 610 nm, respectively. It is resistant to photobleaching and is stable. mCherry is sometimes preferred to other fluorophores due to its colour, as well as its photostability compared to other monomeric fluorophores.

**Molecular Weight:** N/A

**Application :** WB 1:5,000 IHC 1:200 IP 1:100 IF 1:200

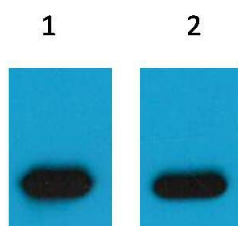
Optimal dilutions should be determined by the end user.

**Specificity:** The mCherry tag antibody can recognize mCherry and mCherry tag fusion proteins.

**Form:** Liquid ,1mg/ml

**Storage buffer:** PBS, pH 7.4, containing 0.02% sodium azide as Preservative and 50% Glycerol

**Storage:** Store at -20°C. Do not aliquot the antibody.



Western blot analysis of mCherry Recombinant protein with mCherry PAB diluted at  
1) 1:5,000    2) 1:10,000