



EMAR Beijing Emarbio Science & Technology Co.,LTD

Anti-EBFP Tag Rabbit Polyclonal Antibody

Catalog No.	EM34034-01	EM34034-02
Size	50µl	100µl

Enhanced Blue Fluorescent Protein (EBFP) emits a strong blue fluorescence. EBFP can be used as protein "tags" to study the sub-cellular localization of proteins and/or their translocation upon stimulation or as markers for transfection in transient and stable expression systems.

Molecular Weight: N/A

Application : WB 1:2,000-5,000 IHC 1:200 IF1:200 IP 1:200

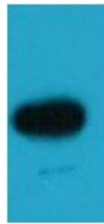
Optimal dilutions should be determined by the end user.

Specificity: The EBFP Mouse Polyclonal Antibody can detect EBFP & EBFP Tag protein.

Form: Liquid ,1mg/ml

Storage buffer: PBS, pH 7.4, containing 0.02% sodium azide as Preservative and 50% Glycerol

Storage: Store at -20°C. Do not aliquot the antibody.



Western blot analysis of EBFP recombinant protein with EBFP PAB diluted at 1:5,000.

EMAR

EMAR