



Beijing Emarbio Science & Technology Co.,LTD

## anti-RHO Rabbit Polyclonal antibody

Catalog No.	EM55137-01	EM55137-02
Size	50µl	100µl
<b>Reactivity:</b> Human Rat Mouse		

**Swiss-Prot No.:** P08100

**All Names:** CSNBAD1; MGC138309; MGC138311; OPN2; OPSD; opsin 2, rod pigment; Opsin-2; retinitis pigmentosa 4, autosomal dominant; RHO; Rhodopsin; rhodopsin (opsin 2, rod pigment) (retinitis pigmentosa 4, autosomal dominant); RP4

**Immunogen:** The antiserum was produced against synthesized peptide derived from Internal of human RHO

**Purification:** The antibody was affinity-purified from rabbit antiserum by affinity-chromatography using epitope-specific immunogen.

**Specificity:** RHO antibody detects endogenous levels of total RHO protein.

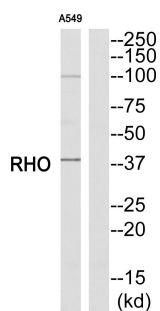
**Application:** WB 1:500-1:3000 ELISA 1:10000

Optimal dilutions/concentrations should be determined by the end user.

**Form:** Liquid ,1mg/ml

**Storage buffer:** Rabbit IgG in phosphate buffered saline , pH 7.4, 150mM NaCl, 0.02% sodium azide and 50% glycerol. Store at -20 ° C. Stable for 12 months from date of receipt

**Storage:** Store at -20°C. Do not aliquot the antibody.



Western blot analysis of extracts from A549 cells,  
using RHO antibody.